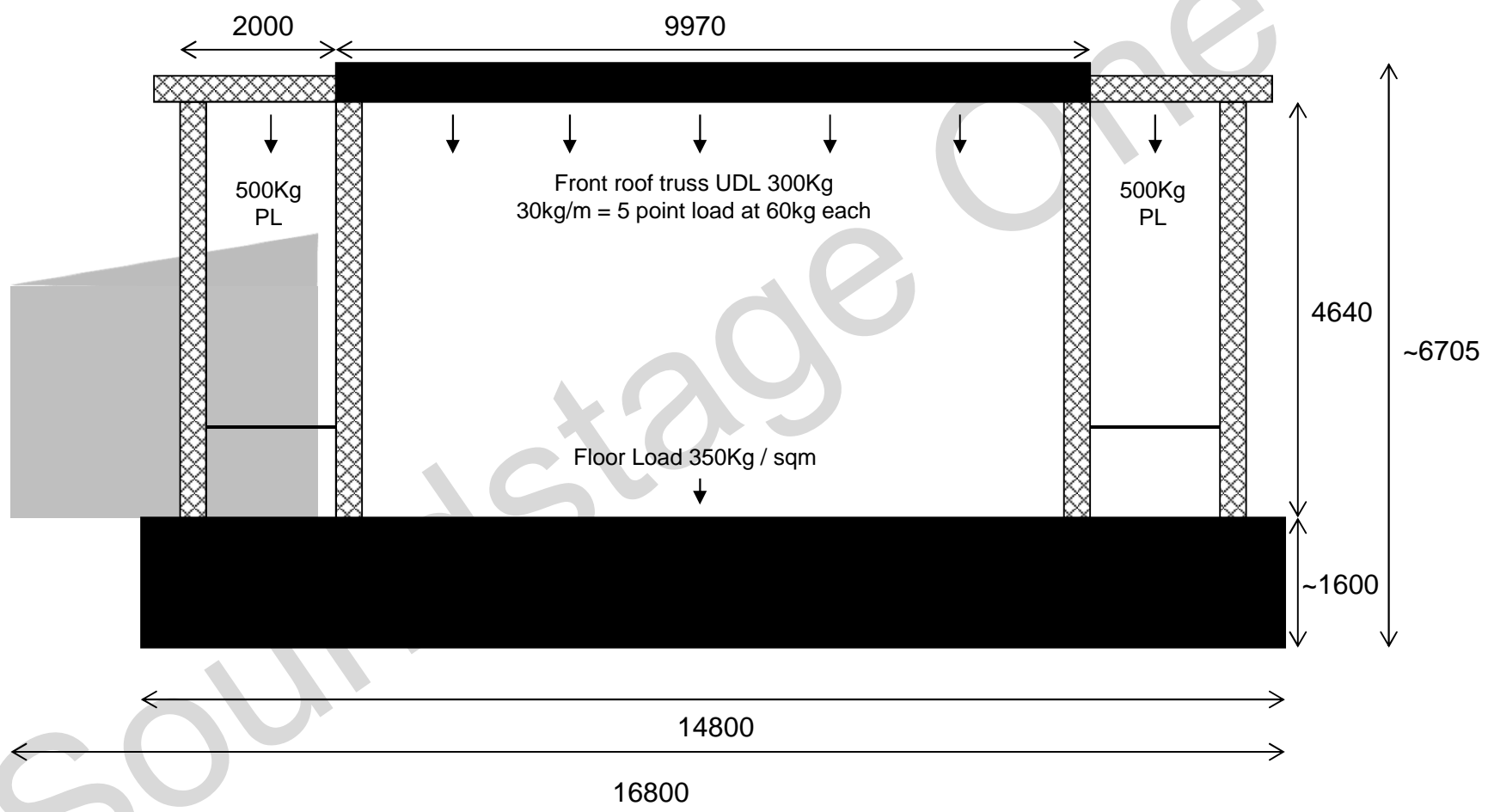
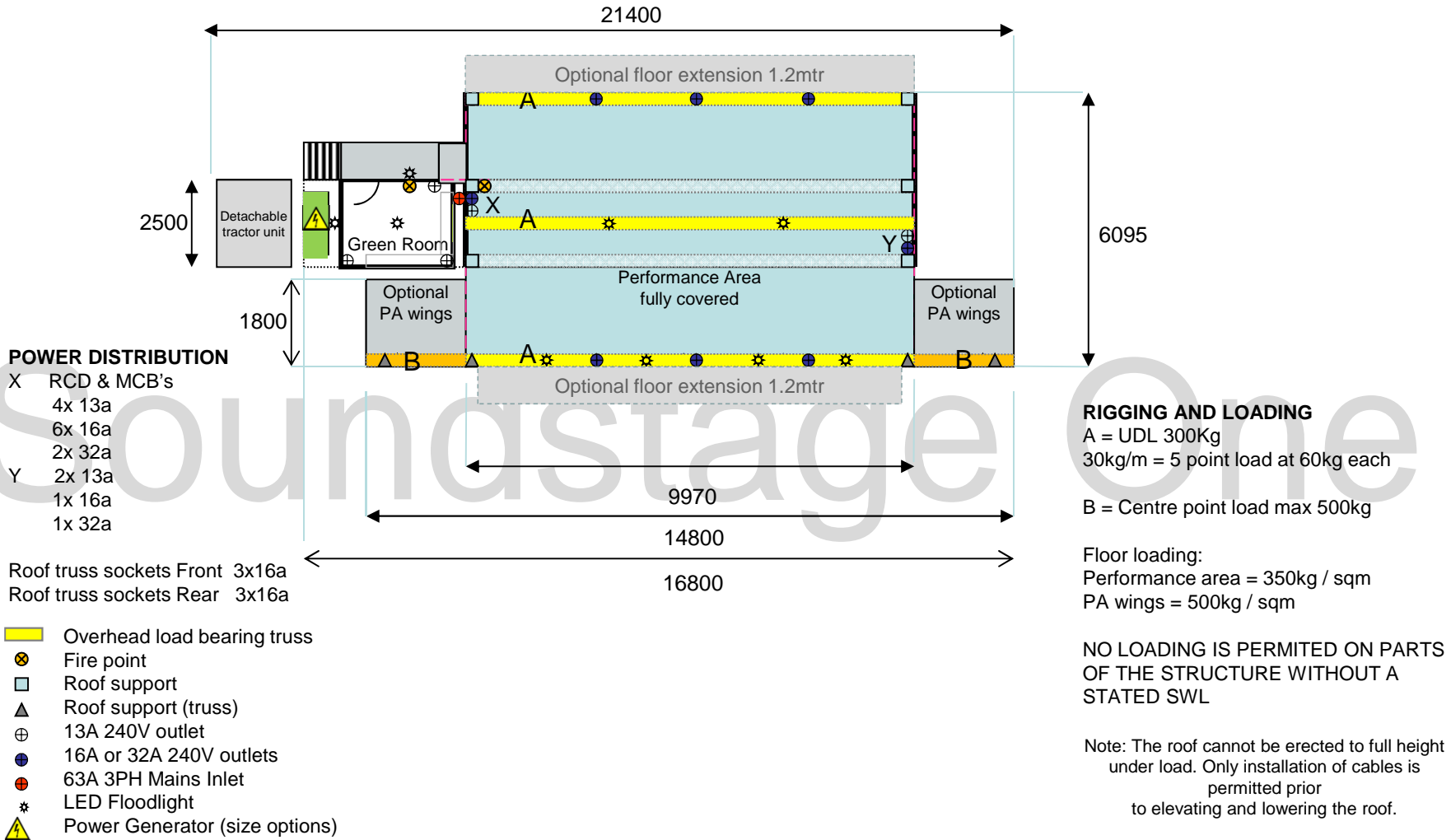


ShowRig MkII Mobile Stage
Dimensions & SWL (with PA wings) – Front Elevation
NOT TO SCALE

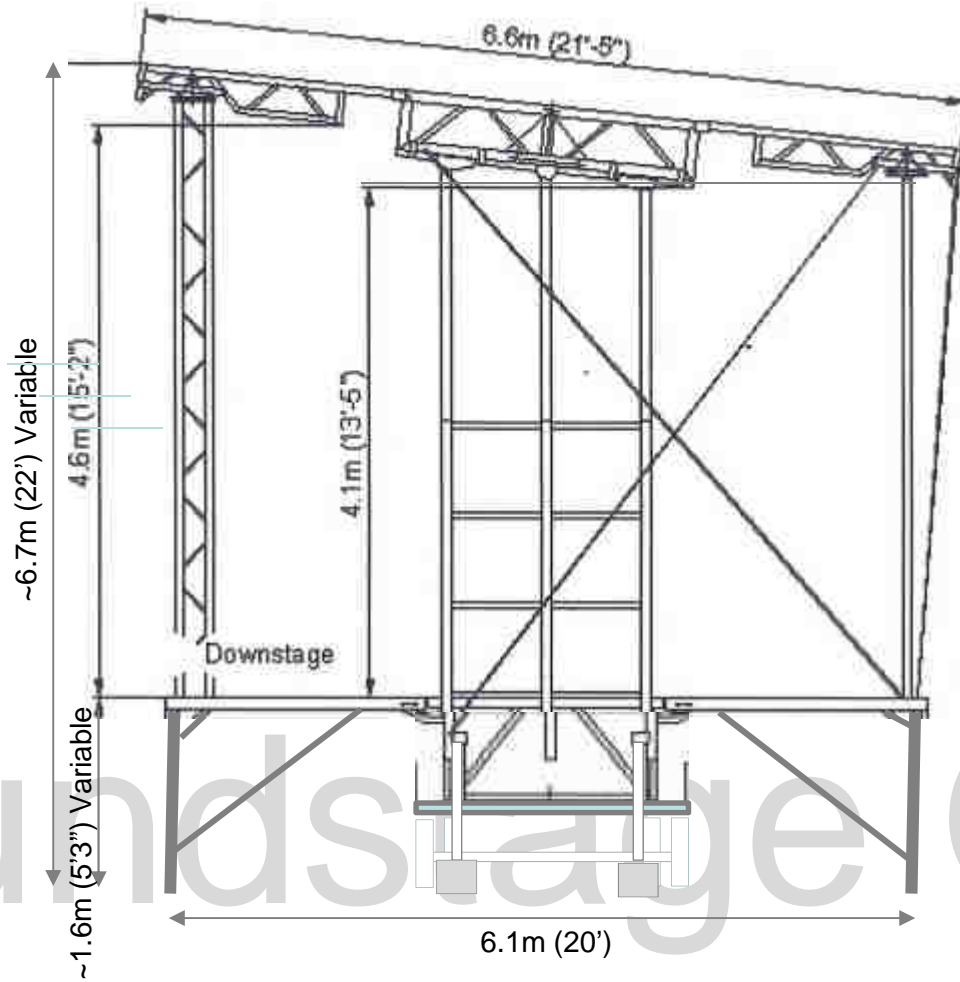


Soundstage One ShowRig II Mobile Stage General Layout, Fittings & SWL (with PA wings) – Plan Elevation

NOT TO SCALE



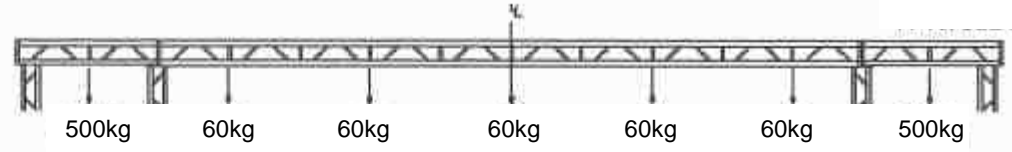
**Soundstage One ShowRig II Mobile Stage
Dimensions – Side Elevation**
NOT TO SCALE



Soundstage One

**Soundstage One ShowRig II Mobile Stage
Rigging points (with PA wings) – Plan Elevation**
NOT TO SCALE

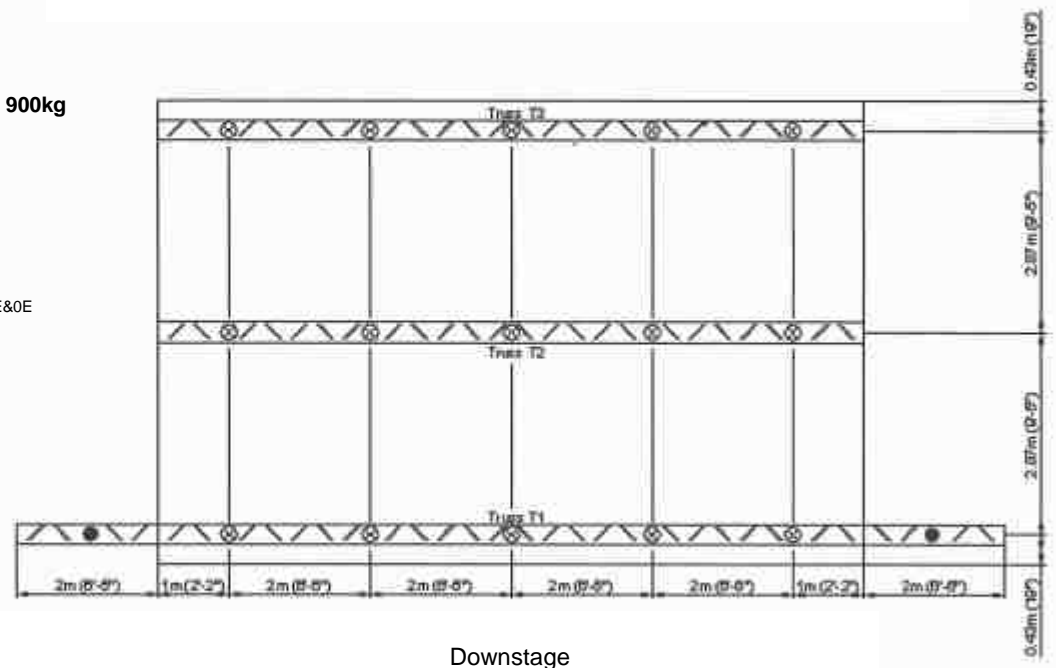
LOAD BEARING TRUSSES



Maximum load of all 3 bearing trusses 900kg
Maximum load per bearing truss 300kg

- Rigging point maximum load 500kg
- ⊗ Rigging point maximum load 60kg

All loads should be evenly distributed
Stage specifications subject to change without notice E&OE



Downstage